

NeuViz 16



Neusoft Medical Systems

Neusoft Park, Hunnan Industrial Area, New & High-Tech
Development Zone Shenyang 110179, P. R. China
Tel: (86 24) 8366 7009 Fax: (86 24) 2378 2797
E-mail: neumedical@neusoft.com
medical.neusoft.com/en



MODEL: N17/0812

NEUSOFT MEDICAL SYSTEMS



NeuViz 16



Delivering premier healthcare without the premium cost

Neusoft[®]
Beyond Technology™



NeuViz 16

Quality and Efficiency

The demand for more accurate diagnostic procedures is continually on the rise. Healthcare institutions and physicians are being pressured to produce more efficient diagnoses. In order to meet future healthcare demands, Neusoft has developed the cost-effective NeuViz 16, 16-slice computed tomography scanner. The NeuViz 16 provides premier patient care while simultaneously lowering costs.

NeuViz16 offers multi-detector capabilities with maximum patient throughput in an exceptionally compact design.

Efficiency

- Provides cost-effective patient care.
- Reliable performance.
- Low environmental costs including minimal space requirements and optimum energy efficiency.



Key Features

- Friendly tool bar and graphical user interface
- Effortless patient data input, intuitive registration and straightforward clinical procedure selection.
- Automatic workflow as necessary and whenever possible.



Technical Features



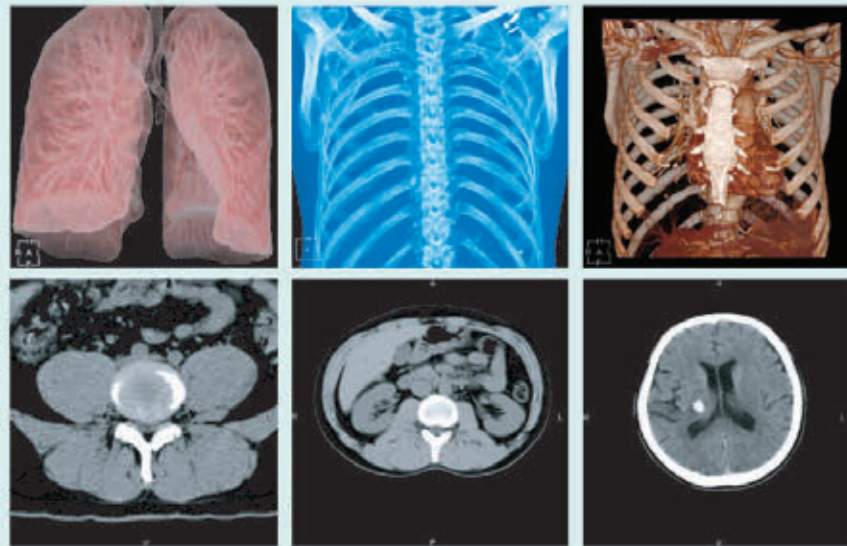
Dynamic Focal Spot enables premier spatial resolution during axial and spiral scanning by alternately sampling two fan beams, doubling the reconstruction data samples which produce a more detailed image.

Newly designed detector optimizes the signal-to-noise ratio and clinical scan time, creating a higher resolution.

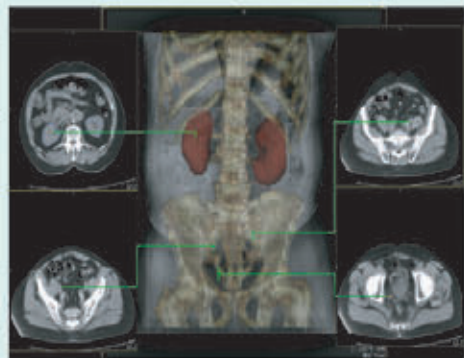
DoseRight
Protocols of NeuViz 16 help reduce the cumulative risk of radiation while obtaining the high-quality images. Features within DoseRight include: Automatic Current Selection, DoseRight Dose Modulation, and dedicated pediatric protocols.

Clinical Benefits

Provides visually enhanced 2D and 3D images

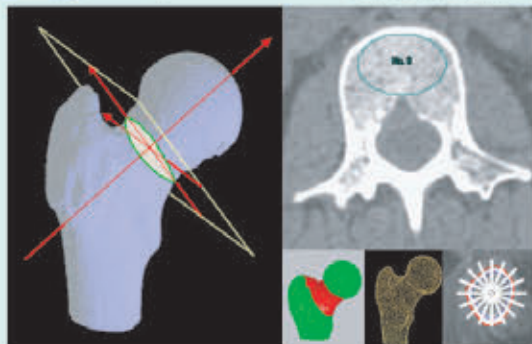


IT Solutions



UroCARE

OsteoCARE



Exceptionally Compact Design...

The NeuViz 16 smaller than average footprint fits in the same space as many single-slice systems. The footprint only requires a minimum room size of 11.5ft.X16.5ft.



Remote Service Capabilities**

- Remote service package continuously links your NeuViz 16 directly to an online service center.
- By proactively observing your system, deviations can be detected at once to prevent any further damages from occurring.
- The remote service package provides ease of mind. We want you to know that your NeuViz 16 is not only running at maximum performance, but that it is continually being serviced from behind the scenes for added assurance.

* Optional
**broadband internet required

