

Contacts

Headquarters

Neusoft Medical Systems Co., Ltd.
No.177-1 Chuangxin Road, Hunnan District,
Shenyang, Liaoning, 110167, P. R. China
Tel: (86 24) 2335 8541
Email: zhang-dan@neusoft.com

Africa

Neusoft Medical Systems (Africa) Co. Ltd.
D1, Ground Floor, Morningside Office Park, Ngong Road
Nairobi, Kenya, 00505
Email: yu.xm@neusoft.com

Asia & Oceania

Neusoft Medical Systems Co., Ltd.
No.16 Shiji Road, Hunnan Industrial Area
Shenyang, 110179 Liaoning, China
Email: zhang-dan@neusoft.com

Europe

Neusoft Medical Europe GmbH
Mergenthaler Allee 45
65760 Eschborn, Germany
Email: shanqh@neusoft.com

Middle East

Neusoft Medical (Middle East) FZ- LLC
No. 705/706, Building 26, Al-Baker Building
Dubai Healthcare City, UAE
Email: liuwanj@neusoft.com

North America

Neusoft Medical Systems, U.S.A. Inc.
14425 Torrey Chase Blvd, Suite 100
Houston, TX 77014, USA
Email: christopher.mchan@us.neusoft.com

South America

Neusoft Medical Peru S.A.C.
Av. Los Conquistadores 175A
San Isidro 15073, Peru
Email: liuba@neusoft.com

medical.neusoft.com/en



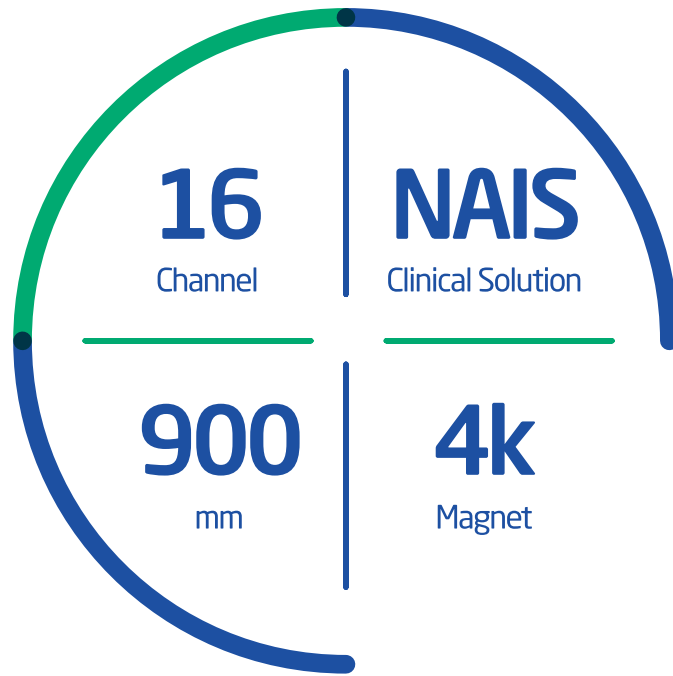
NeuVantage 1.5T

NSM-S15P MRI System



NSM-S15P/17.06

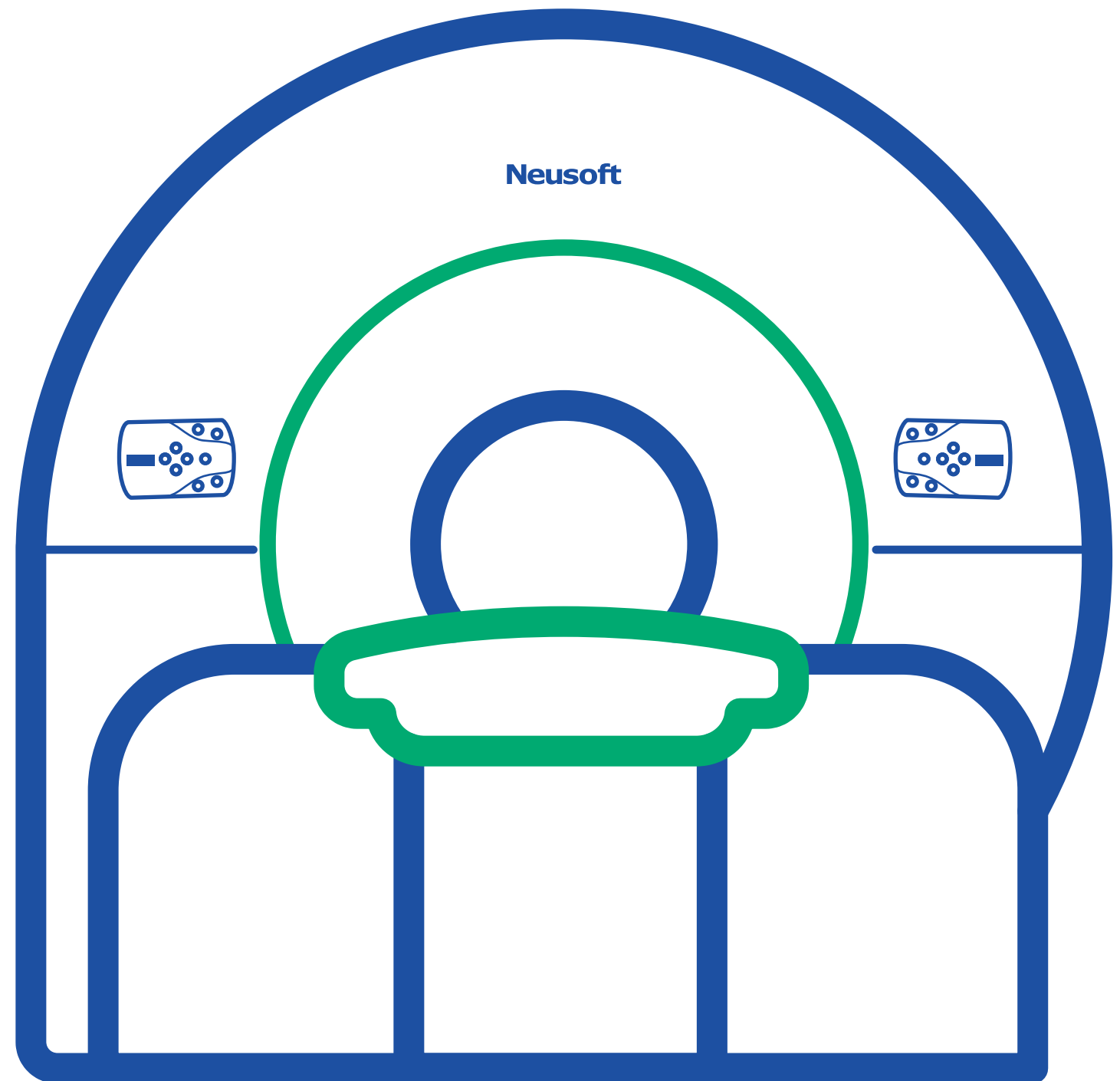
Neusoft® Medical Systems



NeuVantage 1.5T

NSM-S15P MRI System

In a continuing effort to bring customers more value Neusoft Medical Systems has developed the NeuVantage 1.5 tesla MRI system. The NeuVantage 1.5 employs an advanced 16 channel RF platform and new NAIS clinical solutions to deliver outstanding value and clinical utility.





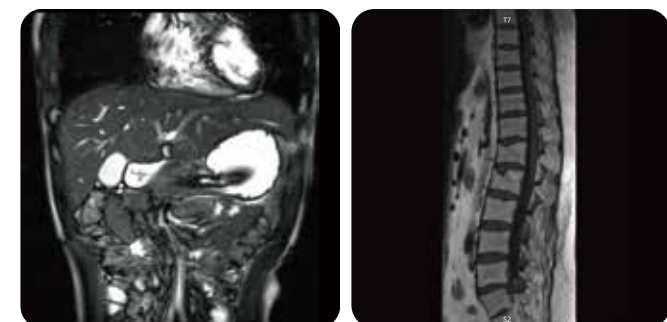
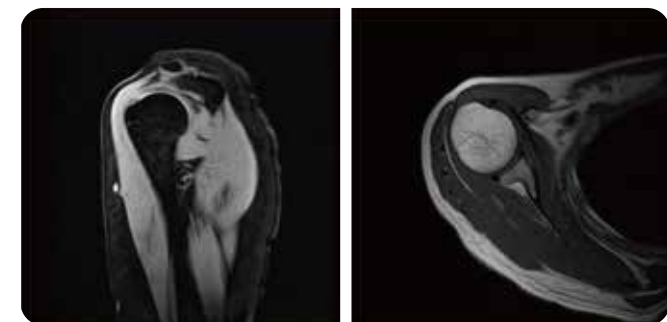
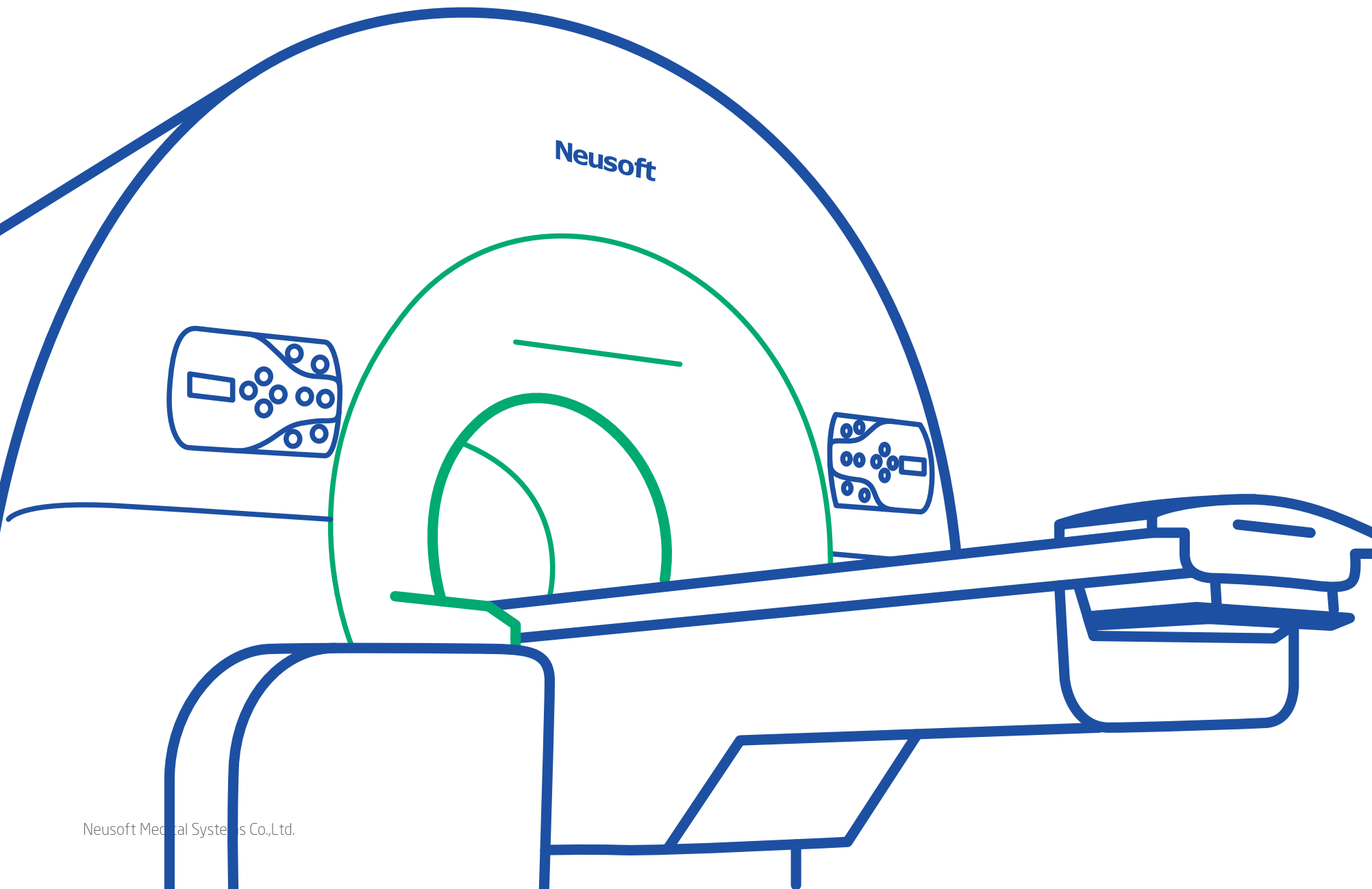
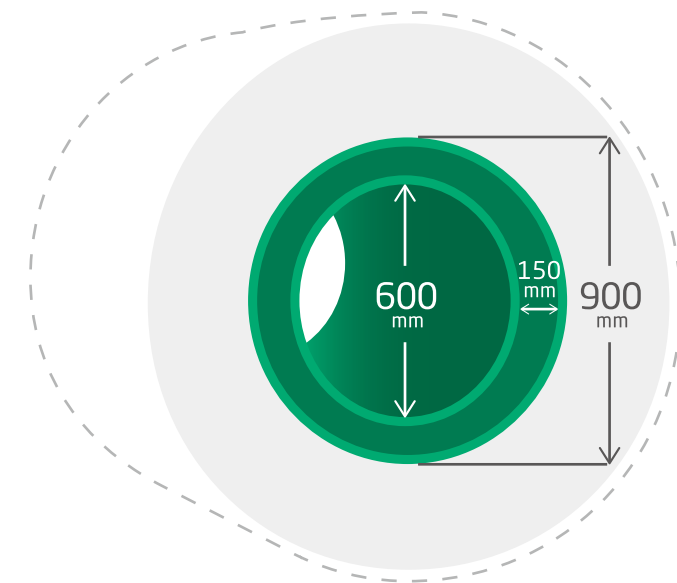
900mm+4K Full-Performance Magnet

Larger FOV And More Uniform



Full performance 900mm 4K magnet system reserves larger design space to enhance gradient and RF efficiency for a more stable system with zero liquid helium boil-off*. Optimized equilibrium design provides excellent magnetic field uniformity, enabling high quality, large FOV and off-center clinical imaging.

*"zero liquid helium boil-off" depends on system running time, employed pulse sequences and an always-on cooling system.



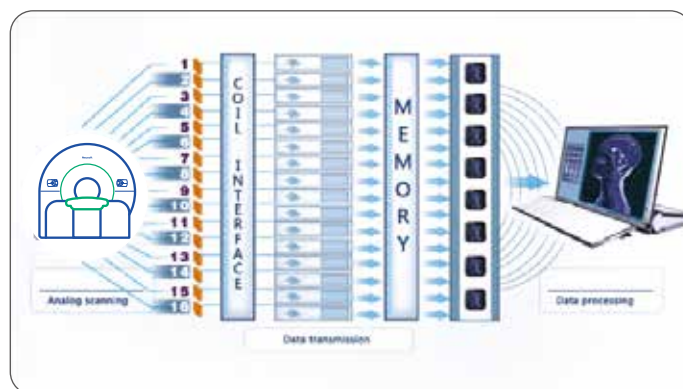


16-Channel RF Platform

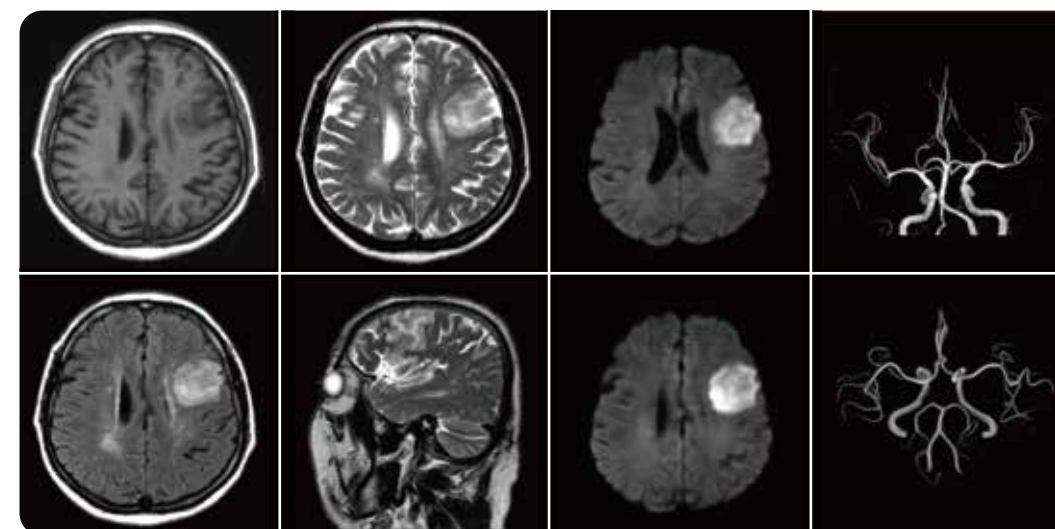
Higher Definition With Faster Speed



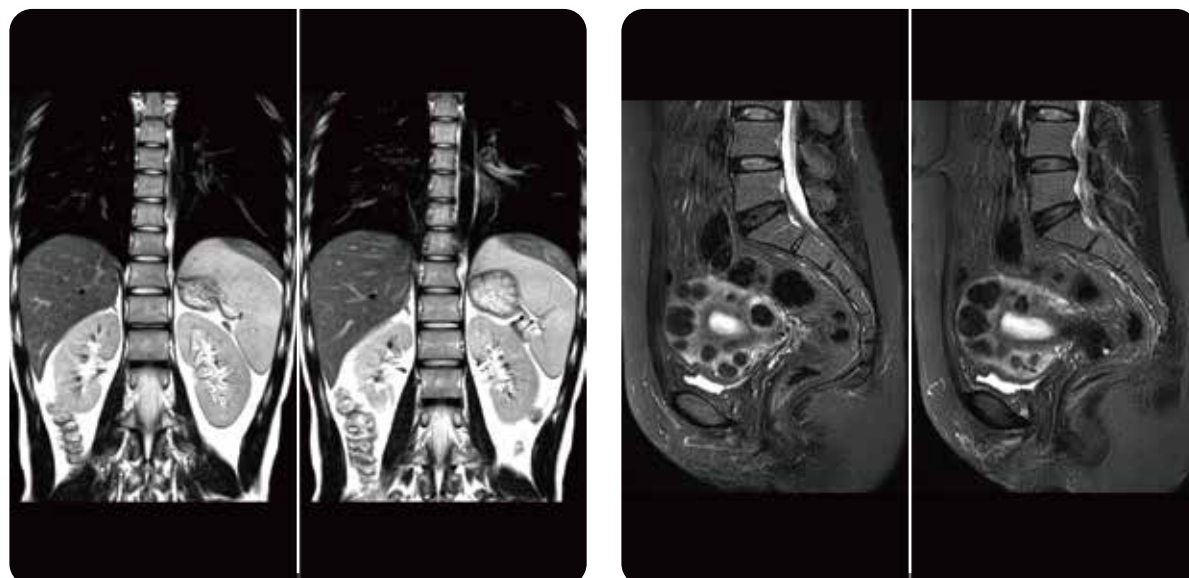
The world's leading independent 16-channel RF platform has laid a strong technical foundation for data parallel acquisition. With new NeuSENSE parallel acquisition technology, NeuSENSE is a parallel imaging technology that provides for increased anatomical coverage. Imaging times are decreased and diagnostic image quality maintained.



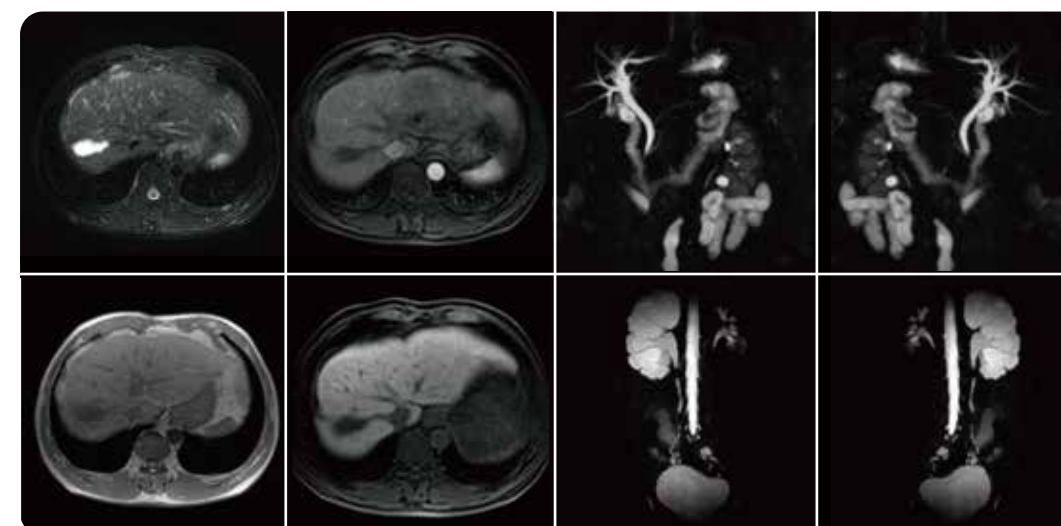
Brain Imaging



Larger FOV Abdominal Imaging



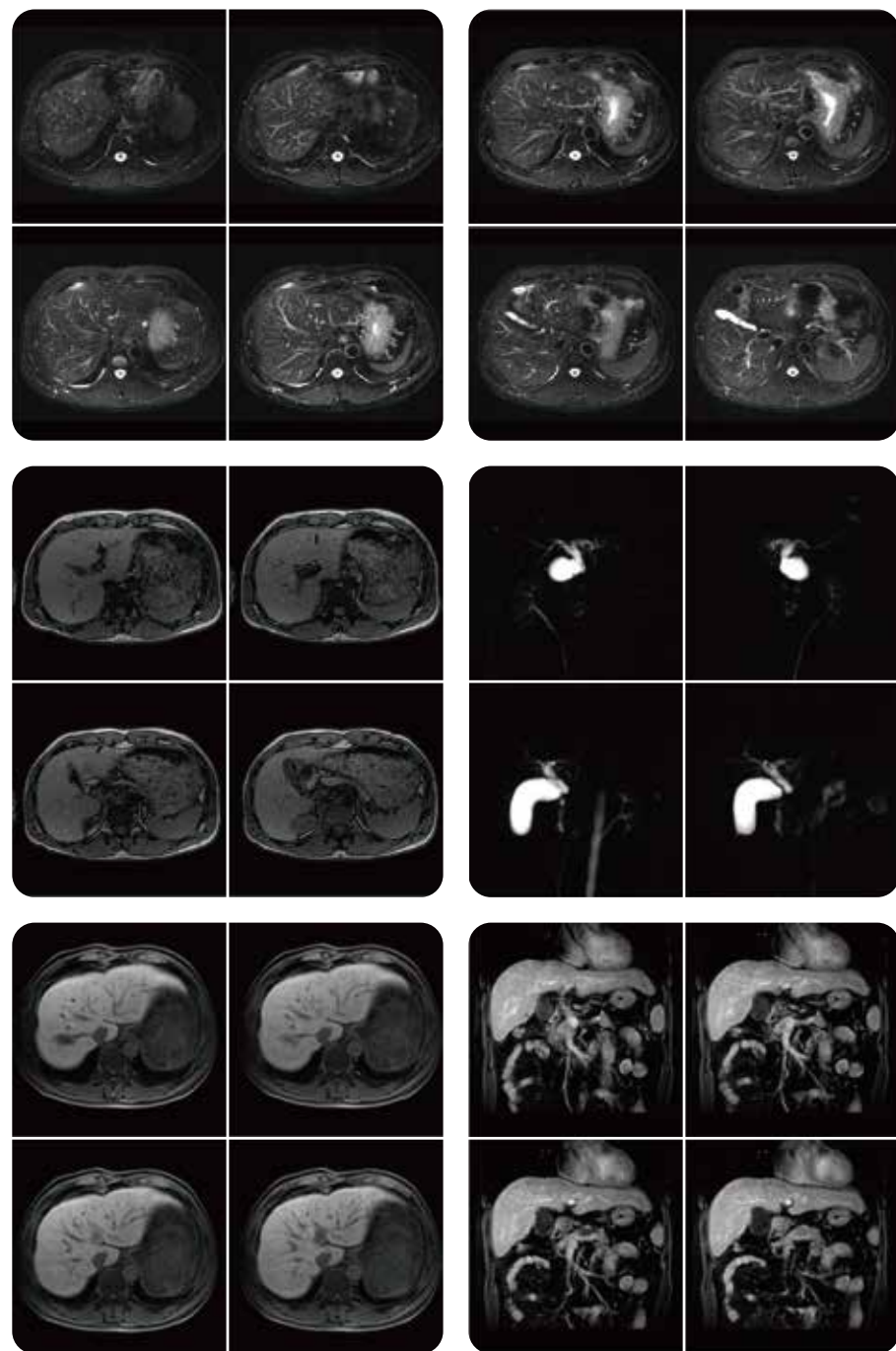
Abdominal Imaging





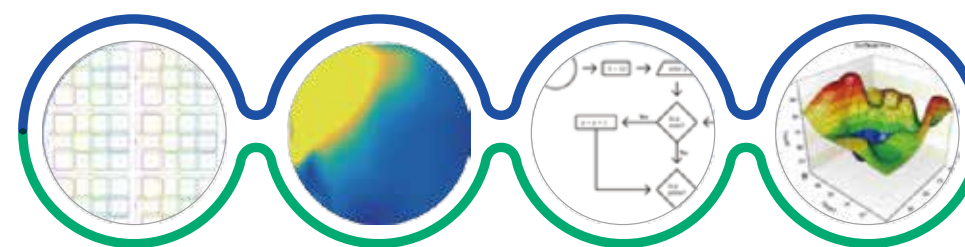
NAIS Clinical Solution, NEW!

Improved Clinical Utility And Efficiency For Abdominal Imaging



Neusoft Parallel Acquisition Acceleration Technology

Optimization Of Acquisition Speed And Image Quality



Enhanced coil geometry

More accurate coil sensitivity maps

Augmented numerical algorithms

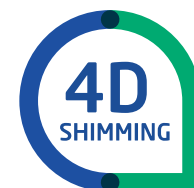
Spatially adaptive noise suppression scheme

Increase penetration
Reduced g-factor

Less residual ghosts
Lower noise level

Faster reconstruction
Reduced numerical imperfection

Balanced noise and artifact level



Dynamic Shimming

High Quality Imaging Enabled Even With Larger Fov And Off-center Imaging

Dynamic 3D shimming for optimum filed homogeneity
Global shimming
Local shimming

Dynamic RF shimming enabling much even B1
System frequency
RF power optimization



Enhanced Fat Suppression Technology

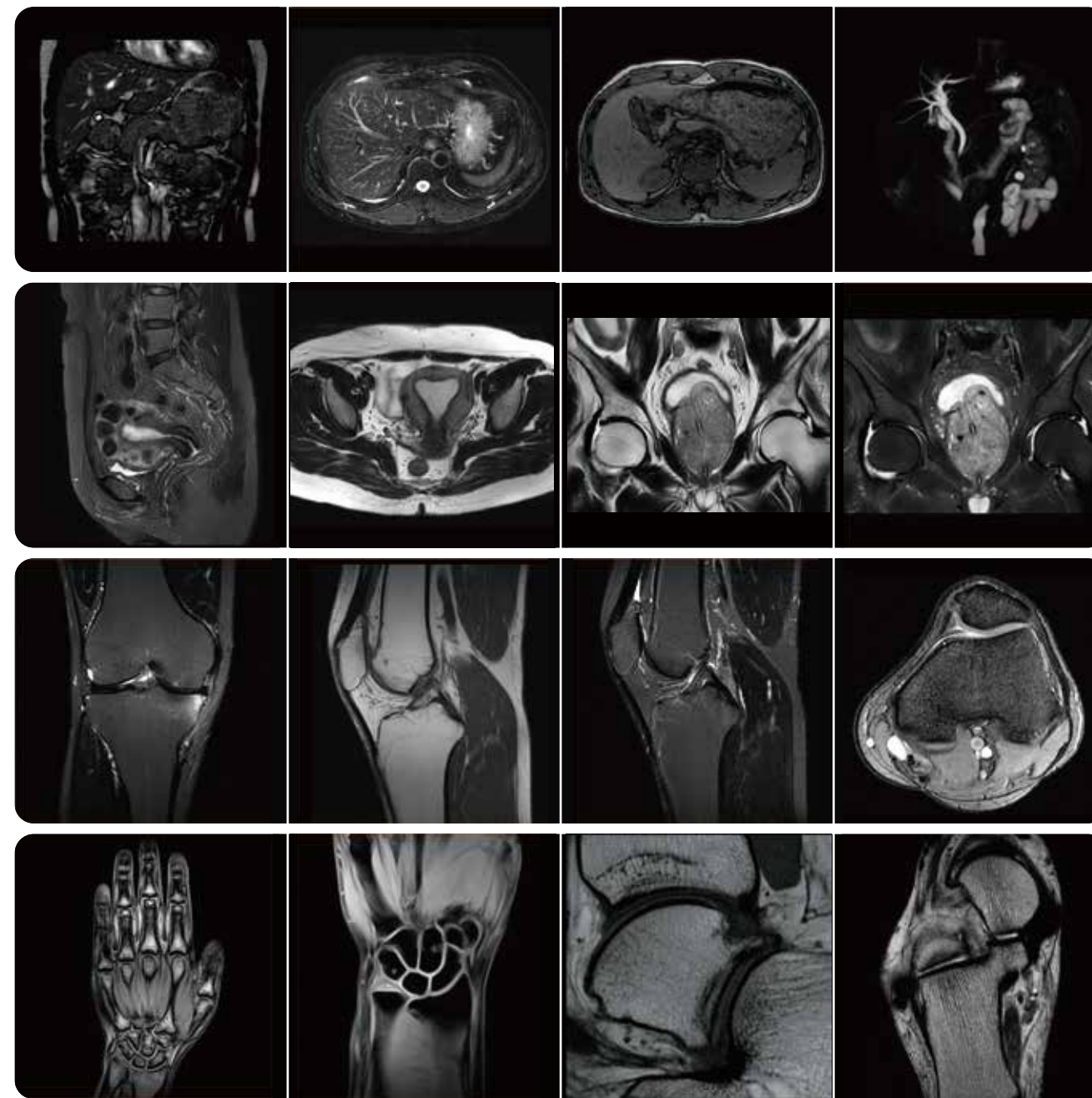
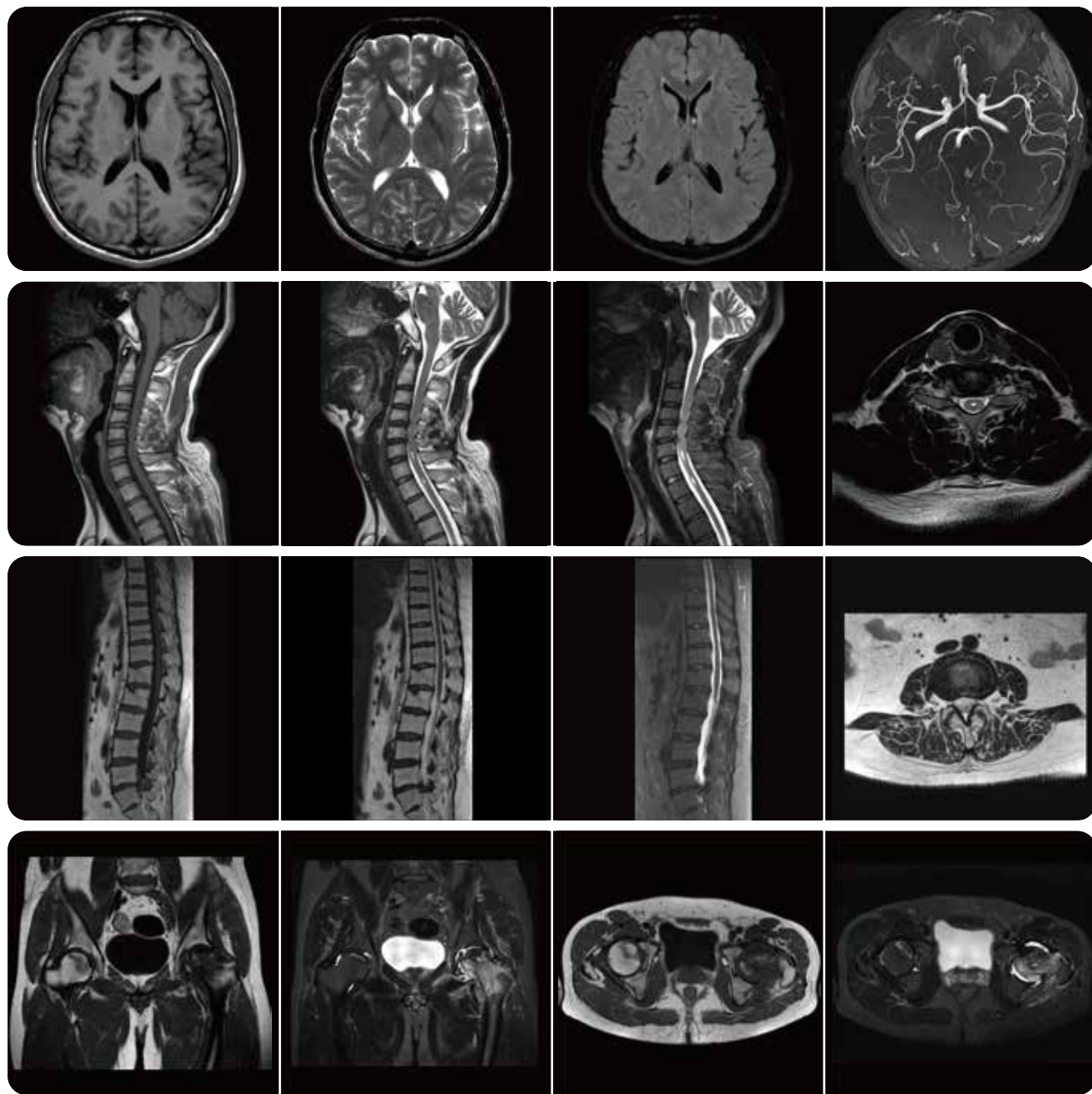
Improved Fat Suppression, More Stable And Effective

Enhanced fat suppression
stable and effective



4D SHIMMING

Comprehensive Clinical Applications





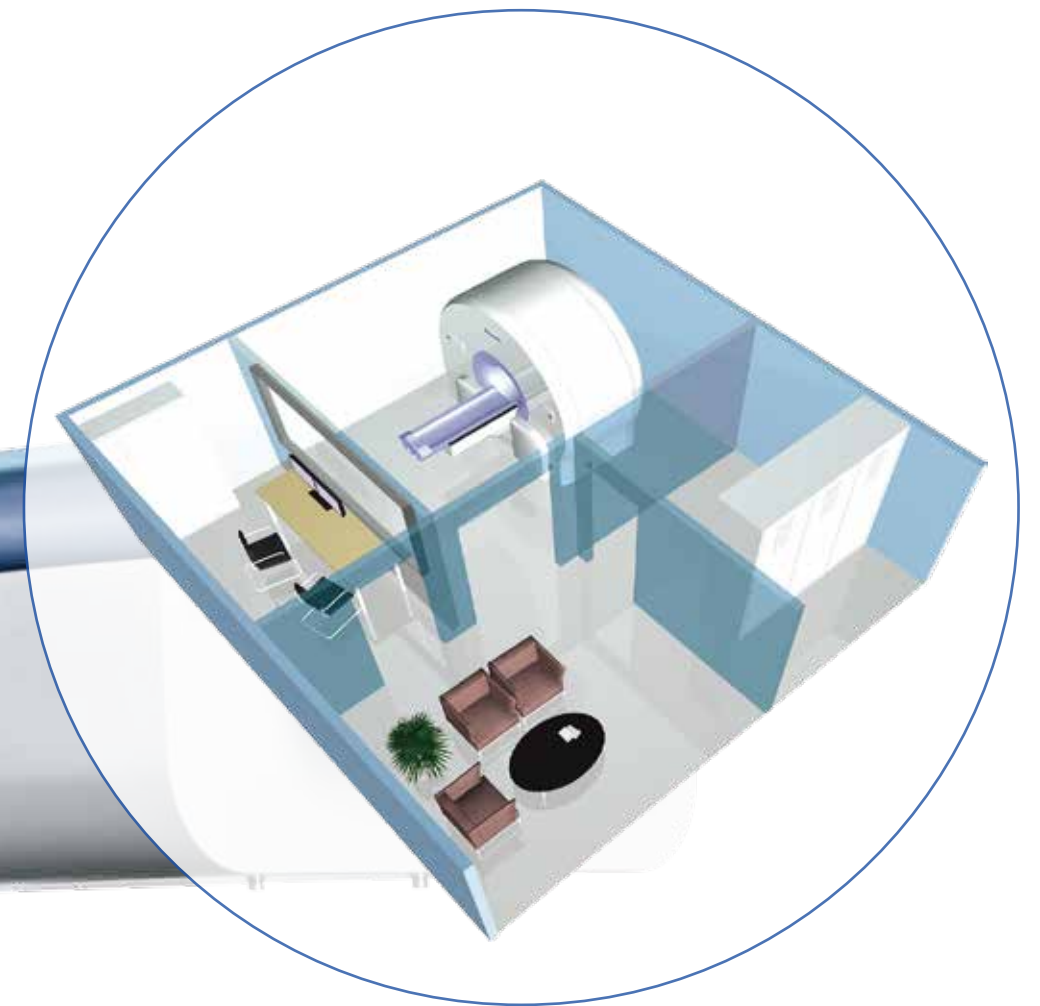
Ultra Low Running Cost

"zero liquid helium boil-off"* 4K magnet

Intelligent electrical saving technology

Flexible site design due to ultra-light

*"zero liquid helium boil-off" depends on system running time, employed pulse sequences and an always-on cooling system.





Service and Logistics Support



Neusoft Global Service & Logistics Network



Support service, after the sales!

- Remote diagnostic capabilities that bring Neusoft expertise to you IMMEDIATELY, no matter where you are!
- Identifying and correcting problems PROACTIVELY, minimizing downtime and patient inconvenience.
- Global logistics network, prompt response regarding parts and supplies.

* Neusoft Medical Systems reserves the right to make change in design and specification of this product at any time without prior notice or obligation and will not be liable for any consequences resulting from the use of this publication. Technical characteristics, descriptions and drawing as provided in this publication are for guide purpose only and do not represent any commitment on behalf of Neusoft Medical Systems.

* Not available in N.A.